

"Source water protection is a win-win for a water supplier and community, because preventing pollution is cheaper than cleanup costs and it protects the water for future generations."

*Cindy Bachman
Catawissa Municipal Water Authority*

Where Does My Drinking Water Come From?

Our drinking water comes from either surface water or groundwater.

- ◆ **Surface Water:** Water that collects in streams, rivers, lakes, and reservoirs.
- ◆ **Groundwater:** Water that flows beneath the Earth's surface replenished by rain and snow melt; the source for drinking water wells.

What is Source Water Protection?

- ◆ A voluntary, proactive approach to prevent pollution to our drinking water supplies.

Columbia-Montour Coalition for Source Water Protection MISSION:

To promote the protection and conservation of source water resources by:

- ◆ Partnering with agriculture, industry, landowners, and municipalities;
- ◆ Educating the public;
- ◆ Developing risk-reduction strategies for protection.

Columbia-Montour Coalition for Source Water Protection PARTNERS:

Berwick Borough
Bloomsburg University
Briar Creek Association for Watershed Solutions
Catawissa Creek Restoration Association
Water Resources Education Network
Catawissa Municipal Water Authority
Columbia County Conservation District
Columbia County Emergency Management Agency
Fishing Creek Watershed Association
Montour County Conservation District
Roaring Creek Valley Conservation Association
Susquehanna Greenway Partnership
United Water
Pennsylvania Department of Environmental Protection



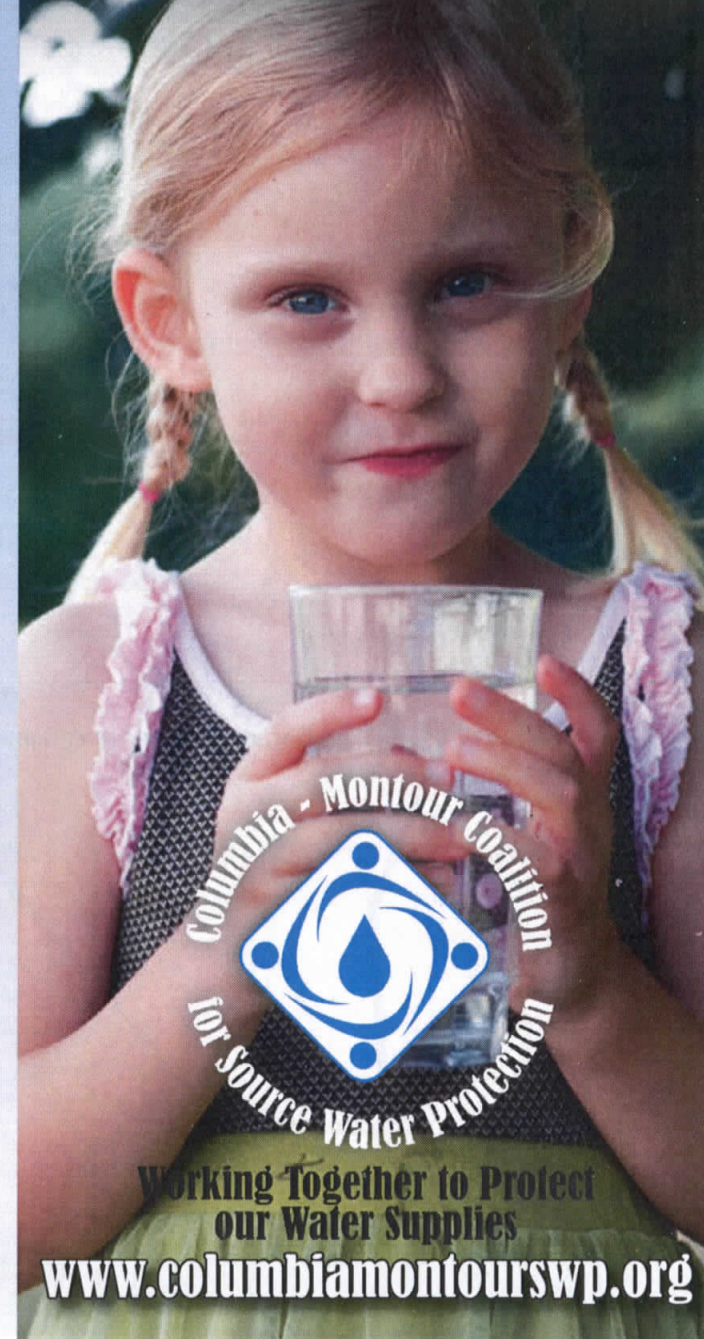
**Columbia County
Conservation District**
570 784-1310

**Montour County
Conservation District**
570 271-1140



This brochure has been funded by the League of Women Voters of PA Citizen Education Fund under a grant from the PA Department of Environmental Protection for Drinking Water Source Water Protection administered by the US Environmental Protection Agency.

Protecting Our Water for the Future!



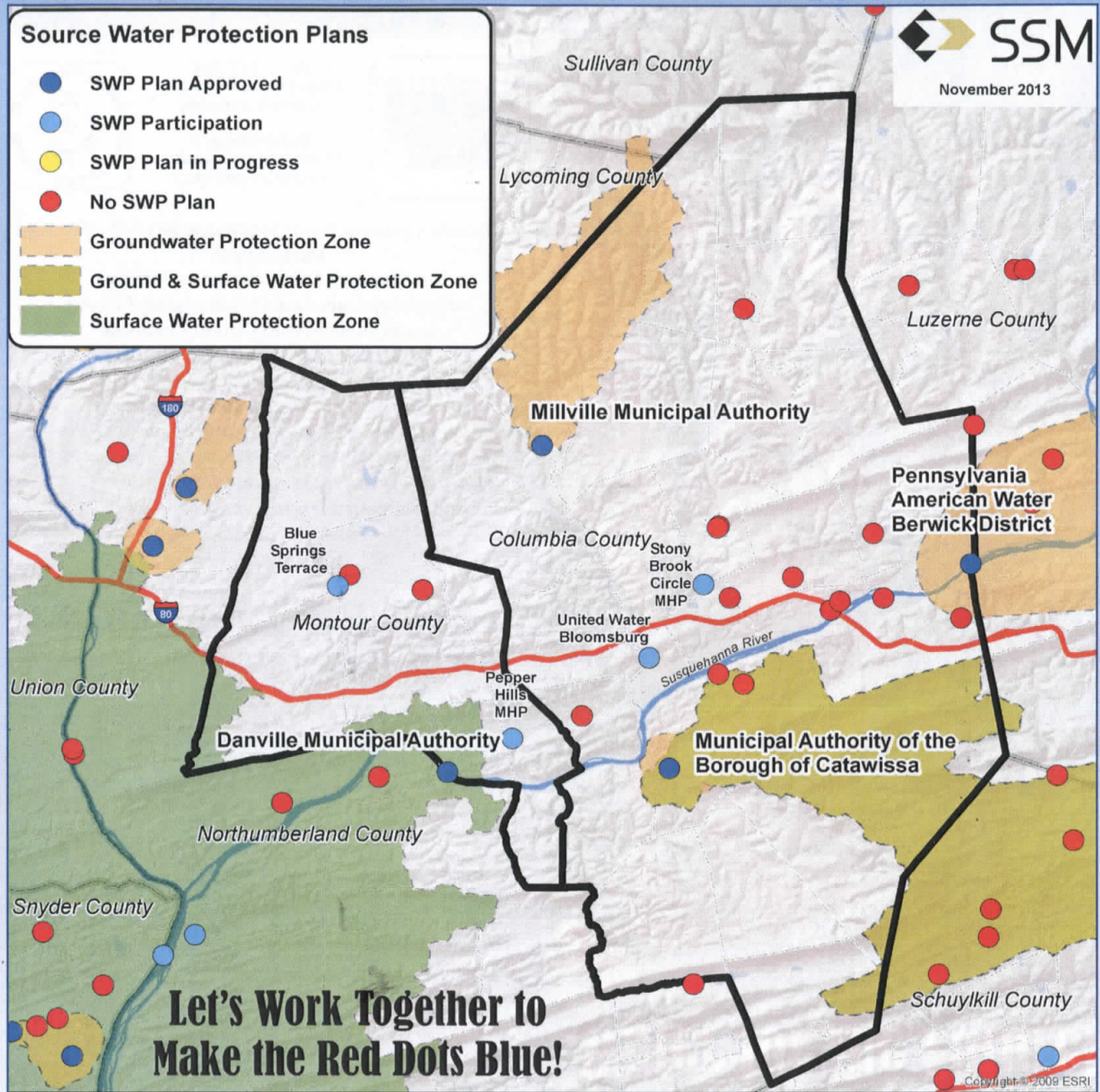
**Working Together to Protect
our Water Supplies**
www.columbiamontourswp.org

What can I do to help?

Join us! Become a partner in the Columbia-Montour Coalition for Source Water Protection, attend our meetings and workshops, and encourage others to attend our educational programs. Ways to help:

- ◆ Encourage your local officials to get involved with the Columbia-Montour Coalition for Source Water Protection
- ◆ Never pour used motor oil or other hazardous waste materials onto the ground or in a storm drain. Find a proper disposal location at www.cleanup.org.
- ◆ Don't flush unwanted medications! Find a drug collection location or event (www.dea.gov) or place medications in a sealed container in the trash.
- ◆ Minimize the use of fertilizers, pesticides and herbicides on your lawn and farm.
- ◆ Join your local watershed organization.
- ◆ Learn about your drinking water supply and conserve water in your home.
- ◆ Pump your septic system every 3-5 years.
- ◆ Encourage your local public water supplier to establish and implement a Source Water Protection Plan.
- ◆ Keep animals, including livestock and their waste, out of local streams.

Columbia and Montour County Water Supply Systems



Let's Work Together to Make the Red Dots Blue!

The dark blue dots represent public water suppliers who have source water protection plans. As a result of those plans, water supply protection zones have been drawn, representing land area crucial to protecting that water supply. Water suppliers use either groundwater or surface water, or both, for their supplies. When a new source water protection plan is created, a new zone will appear on the map showing the land area important for its supply.

Water Problems? Who to Call

Report any spills immediately to 911

Situation	Who To Call	Phone
Dead Fish	PA Fish & Boat Commission or PA DEP	855-347-4545 800-541-2050
Illegal Dumping & Pollution Activities	Northcentral DEP	570-327-3636
Sewage Spills	Northcentral DEP	570-327-3636
Oil & Gas Spills	Northcentral DEP or Statewide Toll Free #	570-327-3636 866-255-5158